


SONY

UPX-C200



Digital Printing System




You make it a Sony

Sony is once again changing the world of instant photography

UPX-C200

The Sony UPX-C200 Digital Printing System is designed to provide high quality Passport/ID photos and mini portraits in a variety of useful print sizes. The system consists of a digital photo printer, which reproduces photo-quality prints at a high resolution of 403 dpi, plus a 4 megapixel digital still camera, which combines exceptional image quality and a well-designed feature set in a single unit.

With state-of-the-art wireless technology built into the system, the UPX-C200 enables you to transmit data between a camera and printer without the need for cable connections. This ensures high operating efficiency at every stage, from image capture to printing. Delivering a variety of photo services in a single system that boosts quality and efficiency, the Sony UPX-C200 is the ideal solution for today's Passport/ID photo and mini portrait applications.



Digital Photo Camera



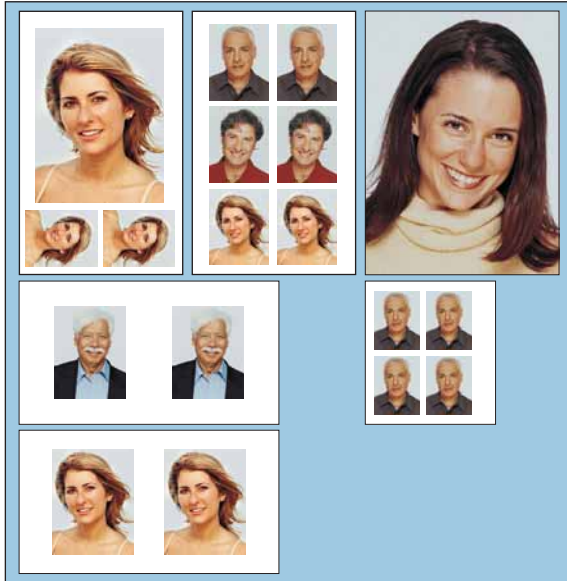
Digital Photo Printer



Print by Sony

Versatile printing

Two print packs – 90 x 101 mm (3 ½ x 4 inch) and 101 x 152 mm (4 x 6 inch) – are available to meet all your Passport/ID photo and mini portrait applications. Both allow you to create combinations of different images and different image sizes on one sheet of media. Using the 101 x 152 mm media, you can choose from 16 different image sizes, including one full bleed (edge to edge) mini portrait. You can also print up to three different images and image sizes per sheet. Using the 90 x 101 mm media, you can choose from 14 different image sizes, and print up to two different images or two different sizes on one sheet of media.

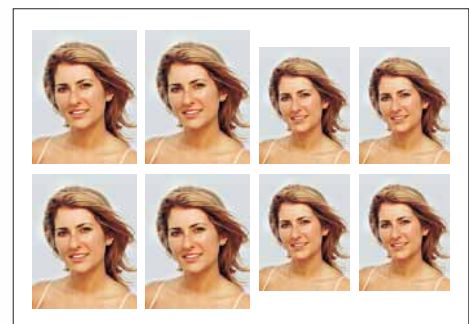
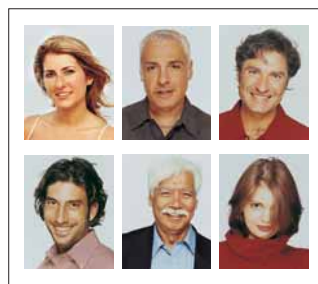
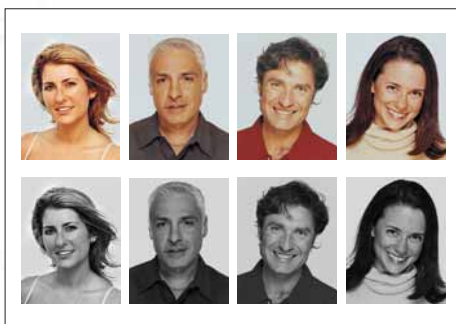


Colour and B/W printing

The system provides both colour and black and white (B/W) print options for a variety of Passport/ID photo applications.

PC connectivity

The Digital Printing System comes with a PC connectivity kit, which further enhances the flexibility of the system. All of the images stored in the camera's memory can be saved onto a PC or removable recording media for photo archiving and printing. In addition, this software enables you to print a mix of colour and black and white (B/W) images, as well as manipulate the page layout and create sheets with multiple subjects and different size images. You can also add the date to your photos.

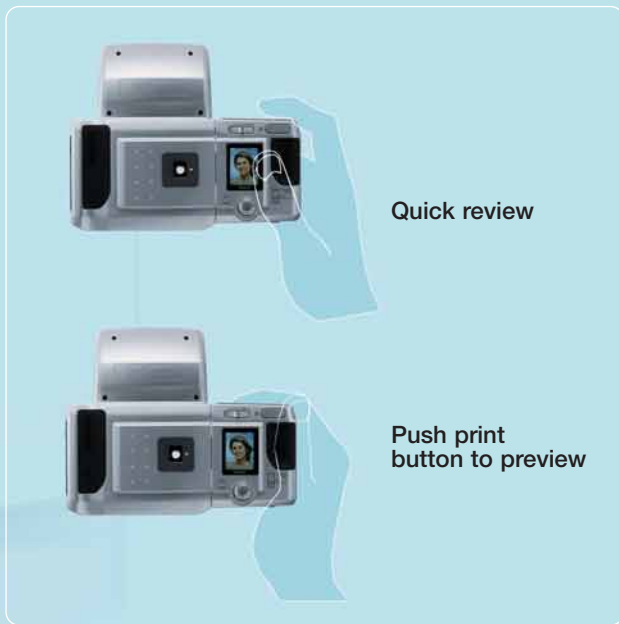


Easy operation

From image capture to printing, all functions – including image size adjustments – can be performed easily from the digital camera. Just click the shutter button, review the image on the camera's LCD screen, and then press the PRINT button to effortlessly reproduce photo-quality prints.

In addition, the system offers a wireless multiple-printer configuration, which allows you to easily choose the designated printer from the camera.

Simple steps from capture images to printing



Push print button to transfer image data

Approx. 11 seconds



Complete picture

Approx. 76 seconds



* When a 47 x 35 mm (1 7/8 x 1 7/16 inch) image is printed on 90 x 101 mm (3.5 x 4 inch) media. Times vary based on image size and media used.

Wireless connectivity

The system incorporates state-of-the-art Bluetooth™ wireless technology, which eliminates cumbersome cable connections between the camera and the printer. Imagine how easy Sony has made it – no camera docking station or camera to printer cable connection is necessary to transfer the images. Bluetooth makes this possible by transferring the data from camera to printer wirelessly. What's more, to increase printing productivity, the system can be configured wirelessly with up to three printers. Utilizing multiple printers is ideal when both 90 x 101 mm (3½ x 4 inch) and 101 x 152 mm (4 x 6 inch) prints are required. This eliminates having to swap out paper trays and change print packs. Also, the UPX-C200 camera enables you to take another photo as soon as the captured image is transmitted to a printer.

Therefore, you can start printing another photo using the optional second printer while the first image is being printed. This keeps your operation going with no downtime.

Note: Wireless connectivity is available only between the UPX-C200 camera and the UPXC-200 printer, or between the UPX-C200 camera and the optional UP-DX100 digital photo printer. Other Bluetooth devices cannot be configured with this system.



Compact, space-saving design

The space-saving design of the printer enables it to be used in even the smallest retail space. It measures only 203(W) x 85(H) x 305(D) mm (8 x 3 3/8 x 12 1/8 inch).

Advanced Features

Quick Review

The Quick Review function allows you to review images while in Camera Mode. After the shutter button is pressed, the camera automatically displays the captured images on the LCD screen. The image remains on the screen until you take another photo. This innovative feature saves you time because, unlike most other digital systems, you do not have to switch from Camera Mode to Play Mode to review and print photos.

The best pictures possible

While the combination of the digital camera and the printer will give you the best quality shot each time, there may be certain images that you want to colour adjust. The colour-guide function lets you maximise image quality by enabling you to easily make hue, contrast, and tone adjustments.

This function is available for both 90 x 101 mm (3 1/2 x 4 inch) and 101 x 152 mm (4 x 6 inch) media.

Perfectly sized images

In addition to offering four preset frame sizes to choose from, the system easily lets you adjust the position of the head and chin lines, as well as the right and left lines, to create a customised frame. This ensures you'll get the exact size you need every time. The camera's swivel-LCD viewfinder can be adjusted 90 degrees, allowing for optimal ease of use.



Specifications

Digital Still Camera

Image device	1/1.8 type IT CCD with 4M pixels
Picture elements	2288 x 1712 pixels (HIGH) 1280 x 960 pixels (MID) 832 x 624 pixels (STD)
Recording medium	Internal memory
Data compression	JPEG
Memory capacity	20 or more images (HIGH) 80 or more images (MID) 200 or more images (STD)
White balance	Auto/One Push/3000 K to 7000 K (500 K steps) selectable
Iris	F2.8/F3.8/F5.0/F8.0 selectable (WIDE) F4.8/F6.3/F8.3 selectable (TELE)
Auto exposure	Except external flash light
Lens	2.6 x Zoom, Auto focus
Shutter speed	1/2 to 1/1000 seconds
Sensitivity	Equivalent to ISO 100
LCD monitor	1.8-inch cold polysilicone TFT colour LCD viewfinder
Digital interface	USB version 1.1
Video output	Composite video (1)
Wireless standard	Bluetooth version 1.1 Class 2
Data transfer time	Approx. 22 seconds: 54 x 54 mm (2 1/4 x 2 1/4 inch) image Approx. 18 seconds: 47 x 35 mm (1 7/8 x 1 7/16 inch) image
Power supply	NH-AA Battery (4) or AC adapter (8.4 V DC)
Dimensions	230 (W) x 190 (H) x 74 (D) mm (9 1/8 x 7 1/2 x 3 inch)
Mass	Approx. 920g (2 lb)

Digital Photo Printer

Printing method	Dye sublimation printing
Printing resolution	403 dpi
Printing gradation	8-bit digital signal processing each for Yellow, Magenta and Cyan
Paper tray capacity	25 sheets (10UPC-X46), 30 sheets (10UPC-X34)
Power requirements	AC 100 to 240 V, 50/60Hz
Power consumption	23 W
Printing time	Approx. 65 seconds (10UPC-X34) Approx. 100 seconds (10UPC-X46)
Dimensions	203 (W) x 85 (H) x 305 (D) mm (8 x 3 3/8 x 12 1/8 inch)
Weight	Approx. 2.7 kg (5 lb 15 oz)

General

Safety standards
UL60950, FCC Part 15 Subpart C (247), CSA No950, IC RSS-210, ICES-003, EN60950, EN300328-1, -2, EN301489-1, -17, EN55022+55024(class B), EN61000-3-2 / EN61000-3-3, CCC (GB4943 + GB9254 + 17625.1), Wireless Telegraph Law:[2001] No.653, MIC (CISPR22 + CISPR24 + IEC61000), Ministry of Information and Communication Republic of Korea – No.2001-67

Supplied Accessories

Operation manual (1 for UC) (2 for CED) (Basic version)
CD-ROM (1) (Printer driver, Utility software, Operation manual, Installation guide for printer driver)
AC adapter (1)
AC power cable for AC adapter (1)
AC power cable for printer (1)
Paper tray: 10UPC-X46 size (1), 10UPC-X34 size (1)
Paper tray cover (1)
Paper holder (1)
Cleaning cassette (1)
NH-AA battery (4)
NH battery charger (1)
AC power cable for NH battery charger (1 for CED)
Coin battery for camera (1)

Digital Still Camera



Side panel

Digital Photo Printer



Rear panel

Optional Accessories



10UPC-X34
Self-laminating Colour Printing Pack
Contents:
10 packs x 30 sheets
Paper size:
90 X 101.6 mm (3.5 X 4 inch)



10UPC-X46
Self-laminating Colour Printing Pack
Contents:
10 packs x 25 sheets
Paper size:
101.6 X 152.4 mm (4 X 6 inch)*

* The measurement between the two perforated lines



UPX-DX100
Digital Photo Printer

©2003 Sony Corporation. All rights reserved.
Reproduction in whole or in part without written permission is prohibited.
Features and specifications are subject to change without notice.
All non-metric weights and measures are approximate.
Sony is a registered trademark of Sony Corporation.
Windows is a trademark of Microsoft Corporation.
Macintosh is a trademark of Apple Inc.
Adobe and Photoshop are trademarks of Adobe Systems Inc.
CA-UPX-200/GB-00/0/2003

SONY

SONY BUSINESS EUROPE

www.sonybiz.net

